

Program Itinerary

This project develops an historical tour of the Doeppenschmidt-Weidner ranch in the Honey Creek State Natural Area, specifically designed for physically-challenged individuals. It addresses the needs of individuals who cannot participate in the current two-mile interpretive nature walk in Honey Creek due to limited mobility, including those in wheelchairs, those who use canes or walkers, or those who may simply require frequent stops and shorter distances. Tours will be offered once a month. If there is sufficient interest, the number of tours per month may be increased.

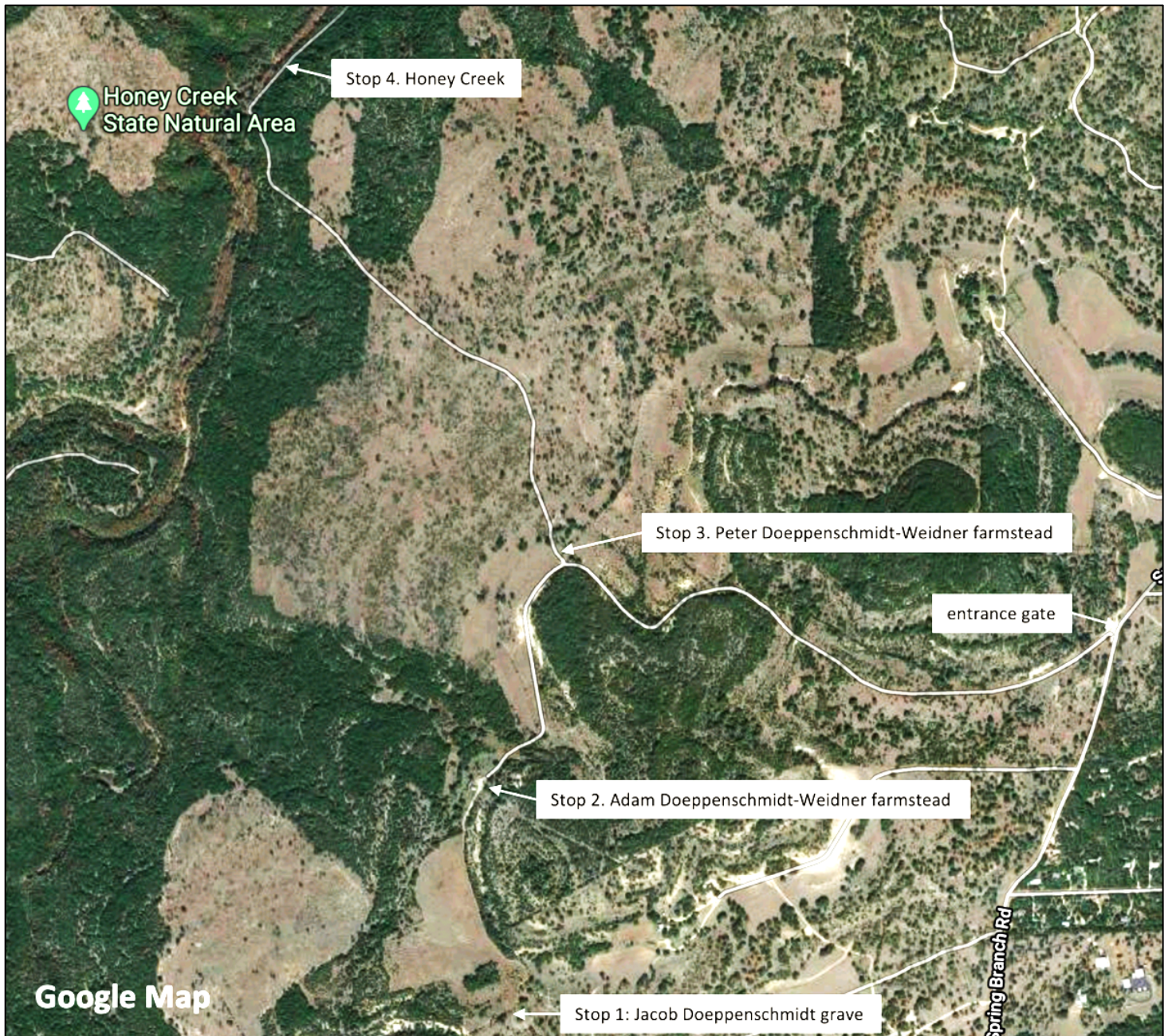
Each tour will be three-to-four hours in length, with four stops including a lunch break. (See map below showing stops.) Modifications will be made in the tour to follow coronavirus guidelines, if they are still in place.

The participants will meet at the Honey Creek State Natural Area entrance off Spring Branch Road. Here the group will sign the liability forms, will listen to a brief orientation, and will receive an iPad (pre-loaded with our program materials, see examples below) with instructions on their use during the tour. The participants will proceed in their cars to four sites, getting out at each site for discussion and observation, traveling short distances by wheelchair or on foot. Discussion and observations will be enhanced with the use of the iPads and viewing of era-appropriate farm and kitchen items. Since there is no shady place at the farmstead, canopy tents will be used to cover the display tables for comfortable viewing. Two ADA-compliant porta-potties will be provided at the second stop.

The four stops will include

- 1) the gravesite of Jacob Doeppenschmidt (d. 1872), one of the first settlers in what is now the Honey Creek State Natural Area
 - a) discussion of mid-late 19th century challenges and immigrants' reasons for settling in the State Natural Area
 - b) history of Doeppenschmidt family
- 2) the Adam Doeppenschmidt (son of Jacob) farmstead, bought by Otto Weidner in 1910 and an active ranch for several decades
 - a) tour of the farmstead and out buildings such as the barns and sheep dip, also using images on the iPad to "see" remote buildings and equipment (see examples below of images available on the iPads)
 - b) discussion of early 20th century challenges and farm life with a hands-on activity examining era-appropriate farm items
 - c) history of Weidner family
- 3) the Peter Doeppenschmidt (son of Jacob) farm site, also bought by Otto Weidner in 1910 and used as an active part of the ranch
 - a) tour of the farmstead
 - b) discussion of early settlers' lives and family stories
 - c) discussion of conservation of cultural resources
- 4) Honey Creek overlook
 - a) discussion of interaction of early settlers with the natural environment
 - b) discussion of unique aspects of Honey Creek and conservation of water and land resource, then and now
 - c) lunch break (participants will bring their own food and drinks)

Google Map of Honey Creek State Natural Area with Entrance Gate off Spring Branch Road and Tour Stops Labeled
Total mileage round trip within the State Natural Area: approximately 5 miles.



Stop 1. Jacob Doeppenschmidt Grave

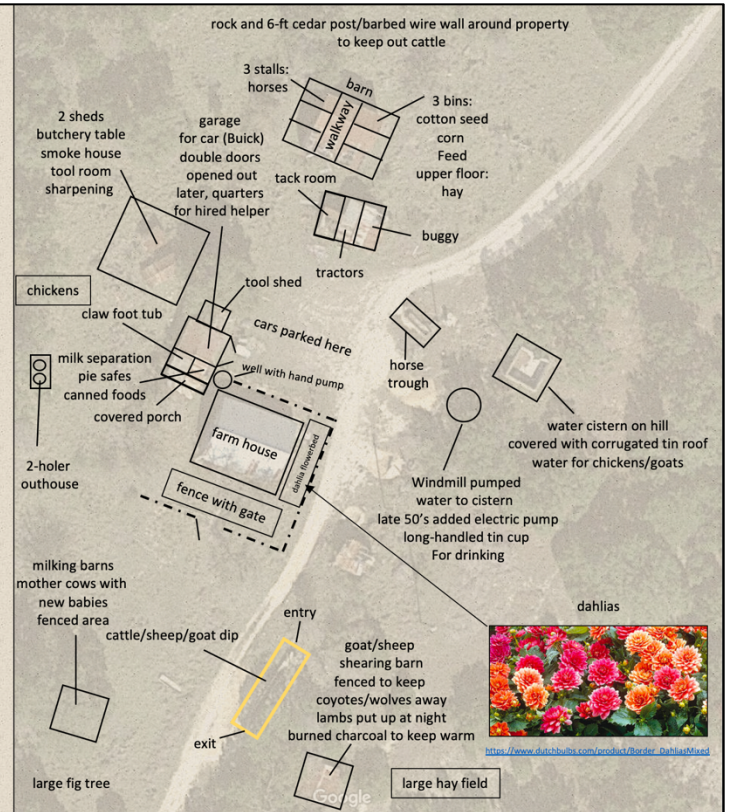


**Jacob
Doepenschmidt
GEB
7 Dec. 1807
GEST
27 Aug. 1872**

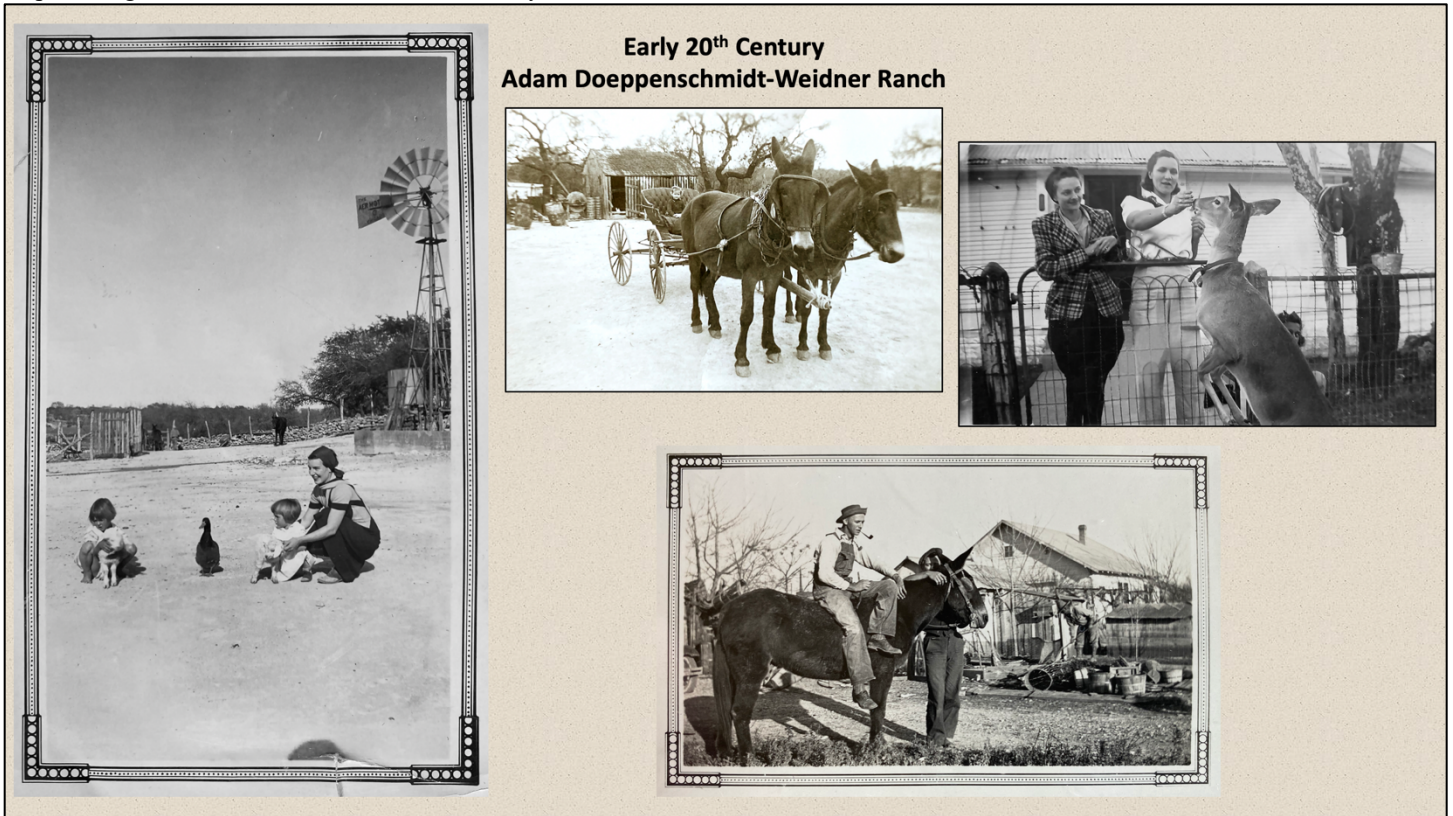
**Andenken seiner Kinder
Gott gebe Ihm die ewige
Ruh**

**[Remembrance by his
children
God grant him eternal rest]**

Stop 2. Adam Doeppenschmidt-Weidner ffirmstead



Stop 2. Images of the Ranch from Weidner Family



Stop 2. Cattle/Sheep/ Goat Dip on the ranch and video

