

SWALLOW TALES

published by the Friends of Guadalupe River State Park/Honey Creek State Natural Area, Inc.

Volume 3 No. 1

A Non-Profit Organization

October, 1995

Grant to Rust Resource Center Allows Project to Move Forward

A generous \$6,000 grant from the Amy Shelton McNutt Trust Fund, out of the personal discretion funds of Courtney Johnson Walker, acting as trustee, will be dedicated to the painting and improvements of the Rust Resource and Visitor Center.

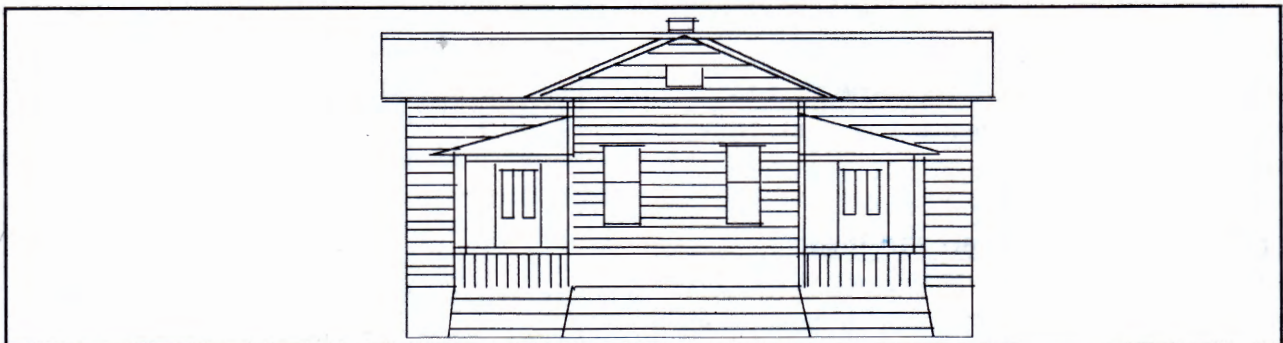
Amy Shelton McNutt, a former owner of the renowned Gallagher Ranch in the Helotes/Pipe Creek area, was a long time advocate of the importance of our natural resources and a supporter of philanthropic causes. The Amy Shelton McNutt Trust Fund allows her work to continue through the support of non-profit organizations.

The grant will begin to meet Friends' goals to develop a regional resource center for cultural, historical, and natural resources of the region for use

by educators, visitors, school children, researchers, and park staff. The Rust House currently serves as the focus of weekly interpretive nature programs and numerous special educational programs throughout the year.

The renovation of the historical ca. 1917 Rust residence will begin with exterior repairs and painting. The \$6,000 grant from the Amy Shelton McNutt Trust Fund, combined with the \$1,000 volunteer grant from Texas Parks and Wildlife Department, will provide for significant improvements during the first year of this project. Additional goals are to upgrade the electrical system, install a sewer system and design interior improvements.

The FRIENDS extend a sincere thank you to Courtney Johnson Walker for her commitment and enthusiasm for the Rust Center Project, and to Texas Parks and Wildlife for their continued support of Volunteers in Parks.



THE RUST RESOURCE AND VISITOR CENTER

The Rust House, basically in its original state, is a well preserved turn-of-the-century Victorian farm cottage. Of Cypress construction, harvested and milled on the property, the cottage has finely finished wood interiors that are in original condition. Two wood porches greatly expand the 3-room cottage.

Fall Activities at Rust Resource and Visitor Center and Honey Creek State Natural Area

Visitors Welcome at All Activities

Mustang Grape and Cactus Tuna Jelly

Over the next five weekends, Saturdays from 1:00 p.m. to 5:00 p.m., Penny Solis will be instructor for the Jelly cooking sessions at the Rust House Visitor Center. In this activity, participants will start with a native fruit and work through the whole process of making jelly from scratch. Everyone is invited to drop in and visit, and helpers are always welcomed.

- **October 14, 21** - Mustang Grape jelly classes from the native wild grape. Class capacity is eight people per session. Participants will take home about 4 1/2 pints of Mustang Grape Jelly.
- **October 28, November 4, 11** - Cactus Tuna Jelly class from the ripe red fruit produced in late summer by the prickly pear cactus. Participants will take home about 3 1/2 pints of Cactus Tuna Jelly.

An activity fee of \$10.00 is required to cover costs of supplies. During the jelly-making the Rust Visitor and Resource Center will have open house, and visitors are encouraged to stop in and try some jelly and listen in on the activities. Both the tunas and grapes were collected south of San Antonio. The fruit has been frozen and kept in the walk-in freezers of The Coleman Company, New Braunfels.

Artists and Photographers Outing

Sunday October 29th and November 5th participants will be able to photograph or paint along Honey Creek Canyon. Both of these dates are still open, but are limited to ten participants. Reservations are required.

Lower Edwards Plateau Ecosystem Walk

Fall is the most beautiful time of year in the canyon with colors peaking in late October in Honey Creek.

Each Saturday in October:

- Walks begin at 9:00 a.m. and return by about 11:00 a.m. from Rust Resource Center.

An easy 2 mile walk along Honey Creek with an interpretation of the cultural as well as environmental history of the hill country area. Topics include geology, folklore, plants, animal life, area history set in the charm of the pristine, Cypress-lined, and spring fed Honey Creek. There is a \$2.00 per person or \$5.00 per family, fee for the walk. FRIENDS members are free.

Membership Meetings of Friends at Rust Resource Center in Honey Creek State Natural Area are 10:00 a.m. to 12 noon on the Third Saturday of each Quarter Month.

Saturday October 21, 1995

Jelly Demonstration & Nature Walk

Saturday January 20, 1996

Bexar Grotto Talk & Slides-"Caves of the Glen Rose Formation in the Hill Country" by experienced Spelunker, Kurt Menking.

Saturday April 20, 1996

To be Announced

Saturday June 15, 1996

Annual Meeting

A special thanks to **The Coleman Company of New Braunfels** for the use of their facilities and their generous donations in kind, as well as in material, over the years.

Guadalupe River State Park To Be Self-Sufficient By Year 2000

by Joan Nitschke

The Commissioners of Texas Parks and Wildlife Department (TPWD) have mandated that TPWD be self-sufficient by the year 2000. Faced with this challenge, the Entrepreneurial Budget System (EBS) was implemented at 17 pilot parks in 1994 and statewide in 1995.

The objective of EBS is to provide incentive for park managers to act in an entrepreneurial manner to promote revenue enhancement, and to save money through efficient and economic operations of parks.

The park manager contracts to meet a specific revenue amount, and the park is able to keep 35% of all revenue generated above that target amount. This provides the incentive for finding ways to increase revenues, such as offering programs to attract new people to the park, selling products, seeking donations or raising fees. A budget is also set for expenditures. If costs can be reduced, any budget savings will carry over into the budget the following year.

Volunteers and Local Support Essential

Partnerships are becoming increasingly important for maintaining quality customer services and providing special visitor services such as interpretive programs and special events.

The non-profit Friends of Guadalupe River State Park/ Honey Creek State Natural Area was established in 1994 as a support group for the park. The primary purpose is to raise funds through memberships, donations and grants in order to support park projects that would otherwise not be possible given the current budget situation.

Park Hosts

Park Hosts have become an integral part of park operations by joining park staff in the daily tasks of park maintenance and by applying their skills

and expertise to special projects. The opening of the park store in the spring of 1995 was possible only through the many hours of cleaning, repairing and painting provided by park hosts. Hosts reside at one of four specially created campsites on the park, provide at least 32 hours of volunteer services each week, and serve as valuable goodwill ambassadors.

Park Store - "Swallow Bluffs Store"

Products are now for sale at the park headquarters and at the new "Swallow Bluffs" park store during spring and summer. Visitors can find convenience items (ice, firewood, camping supplies), gift items (T-shirts, walking sticks, TPWD catalogue items), nature books, and activity kits for children. Through the sale of these products, we are able to provide a customer service, generate revenue for the park, and promote the appreciation and education of our natural resources.

Park Goals

The goal of self-sufficiency cannot be accomplished alone. Only through the help and commitment of our volunteers and friends will we be able to offer the quality service and the quality outdoor experience that our visitors so richly deserve. The coming year offers many challenges and opportunities, and we look forward to meeting them together.

FRIENDS:

Lessons From Geese....

As each bird flaps its wings, it creates an "uplift" for the bird following. By flying in a "V" formation, the whole flock adds 71% to the flying range than if each bird flew alone.

Moral: People who share a common direction and sense of community can get where they are going more quickly and more easily because they are traveling with the combined thrust of one another.

reprinted from Mal Memos

Officers and Directors

Henry F. Wagner	President
Joe G. Vanecek	Executive Vice President
Linda Sutton	(in charge of Rust House Renovations) Vice President
Richard Solis	(in charge of Programs) Vice President
Jeanne Manry	(in charge of Rust House Programs) Treasurer
Janet Wagner	Recording Secretary
Tink Manry	Parliamentarian
Editor of Swallow Tales Newsletter	Jessica Michaels

Directors (continued)

Dan Baker	Charlene Simmons
Betty Baker	Courtney Walker

Associate Directors

Chuck Janzow	Lois Newton
Allen Perry	Wayne Rahe
Patti Roetman	Ken Sutton

Park Staff

Duncan Muckelroy	Park Superintendent
Joan Nitschke	Park Staff Liaison to Friends

FRIENDS OF GUADALUPE RIVER STATE
PARK and HONEY CREEK, SNA, INC.

MEMBERSHIP REGISTRATION

Miss/Mr/Mrs

Name _____

Address _____

City/St/Zip _____

Phone/AC: _____

Date _____

Classroom (to Age 18)	\$ 5.00
Student (Age 13 to 18)	\$ 5.00
Individual (over age 18)	\$ 8.00
Family	\$ 12.00
Supporting	\$50.00
Sustaining	\$100.00
Corporate	\$500.00
Life Membership	\$1000.00

A Very Special Thank You To

Deirdre Hisler

for her dedication, continuous support and enthusiasm.

FRIENDS OF GUADALUPE RIVER STATE PARK AND
HONEY CREEK STATE NATURAL AREA, INC.

3350 Park Road 31
Spring Branch, Texas 78070