

Friends of Guadalupe River, Honey Creek, Inc.

A non-profit organization



President's Letter

by Nancy Gray

Board of Directors

This could be your best year yet as part of the friends group!

We have one of the greatest parks around right here. It is a new year and the president and board of the friends group are full of ideas and enthusiasm. We want to have at least one general meeting a quarter for all Friends members. We are planning another training session for Honey Creek interpretive guides. The planning and scheduling for the Saturday night interpretive programs is underway. And then of course there is always Halloween and it just gets bigger and better every year.

There are so many projects and activities that we would like to see at GRSP and Honey Creek. We have some funds but we need people power! This is a call from your president and board for help. We need more of our members to be involved from a time as well as a dues standpoint. We would like to pick and take on at least one major project this year. We are discussing various ideas right now. Any of you who are interested are invited to attend our board meetings on the second Thursday of every month at the Rust House. There are little jobs, in between jobs, and big jobs. We need people to help outside and inside, like scheduling Saturday night interpretive programs. There are some jobs where we simply need some backup. Many of these volunteer efforts qualify for Texas Master naturalist volunteer hours. Come join the fun and feel a sense of accomplishment when you see improvements at YOUR park and state natural area. Call Nancy Gray 830-229-5376 or Tom Anderson 210-653-5225 to find just the right opportunity to help for you.

I'll see you at the park!

President

Nancy Gray
830-229-5376
grayabbott@aol.com

Vice President/Ed. Programs

Holly Camero
210-490-4882
Eyesthatfly@aol.com

Secretary/Newsletter

Terry Urbanczyk
830-980-2311
rturban5@gmail.com

Treasurer

J.W. Pieper
830-336-3241
jwp.1@gvtc.com

Director/ Web Master

Dan Freeman
830-899-5539
alyseskia@yahoo.com

Director/Maintenance

Dave Kibler
830-336-3718
djkib@gvtc.com

Director/Historian

Bryden Moon
830-336-3375
Bemoonjr@aol.com

Director/Past President

Wilt Shaw
830-230-5008
wshawjr888@aol.com

FRIENDS OF GRSP/HC, INC.

GENERAL MEETING

April 19, 2009 - At the Rust House 2:00 to 5:00pm

In conjunction with the

Honeycreek Homesteaders Homecoming

Come hear some living history of our beautiful park and the surrounding area and learn about what's in store for the future of the park. Enjoy refreshments and "Pot Luck" Desserts! And a Honey Creek Hike afterwards. All members and guests welcomed!

Interpretative Guide Training

by Tom Anderson

The Friends of Guadalupe river State Park/Honey Creek are in need of additional Interpretive Guides for Honey Creek SNA!

Training session. On Saturday, March 7th from 8:30 AM-4:00 PM at GRSP/HCSNA.

Cost: \$25.00 (payable to Friends of GRSP/HCSNA)

Training will consist of:

- An Introduction To Interpretation
- History of Interpretation
- How to Interpret Honey Creek State Natural Area
- An Interpretative Walk
- State Parks' role in Interpretative Walk Program
- Friends of GRSP/HCSNA role in providing walks
- Expectations of participants after training

Participants will receive:

- Training to become an Interpretative Guide for HCSNA
- Handouts for Training Session
- Membership to Friends of GRSP/HCSNA, Inc.
- Interpretative Guide Patch once training is complete
- Snacks and drinks. Participants should bring a lunch.

For registration and/or more information, contact:

Tom Anderson Email- tanderson46@satx.rr.com Phone- 210 241-1916

If registering by mail, send to: Friends of GRSP/HCSNA, Inc.,3350 Park Road 31
Spring Branch, Tx. 78070

Training will be limited to the first 20 individuals enrolled.

Web Site

by Dan Freeman

Honeycreekfriends.com is a portal to the world of the Guadalupe River State Park. Operated by the Friends of Honeycreek, the site provides information about the Park and scheduled activities and events.

Information available will be Saturday night speaker programs, copies of previous newsletters, Halloween in the Park, workshop and educational opportunities, Honeycreek tour opportunities, videos and photographs of the park.

Visitors will also find links to environmental information such as weather (hurricanes and radar), plants, children activities such as Mia's Newsletter, and an interactive map.

Stop by when you have the chance and explore our site.

Park Happenings

by Craig Hensley

Eagle Lady Lands at the Park

This past January, Doris Mager, known as the “Eagle Lady of Florida” pulled into the park in her van, a great-horned owl perched on the back of the passenger seat, a crested caracara on the back of the driver’s seat. This wonderful lady then went on to deliver several programs over the course of a weekend that attracted more than 230 park visitors.

She shared her love of raptors with the audiences, speaking about their roles in nature and how important they are. She brought

out four birds, the aforementioned great-horned owl, the crested caracara, an eastern screech owl and a beautiful male American kestrel.

Everyone loved the programs and the birds as the photos show. Doris’ visit was made possible through the generous support of the Friends group and we look forward to a return visit by Doris and her avian friends next winter.



Bird Banding Kicks off at the Park and Natural Area

Park Interpreter and licensed bird bander Craig Hensley initiated a bird banding program in December. Public programs, entitled “A Bird in the Hand,” provide park guests with a unique opportunity to see songbirds up close and personal and learn about their identification and natural history. In addition, participants witness first hand the process of bird banding and help release birds after they have been banded.

In addition to these banding opportunities, Craig is recruiting volunteers for a series of banding research efforts recently initiated at Honey Creek State Natural Area. These efforts are

time and labor intensive and designed to be-

gin long-term monitoring of songbird populations throughout the natural area and park, with particular focus concentrating on responses of birds to Ashe Juniper removal.

If you are interested in becoming a volunteer with the bird banding program, please contact Craig at craig.hensley@tpwd.state.tx.us or by calling his office at 830.438.7653.



Homesteaders' Homecoming

by Bryden Moon

Homesteader Homecoming Scheduled for April 19th

April 19, 2009 (Sunday) has been selected as the date for this year's Homesteader Homecoming – a unique forum where descendants of local pioneers share their rich heritage with guests and each other. This time around, we will have a new venue: the **Rust House** will serve as our facility, insuring that, if the rain we all have been praying for comes, we will have a dry and comfortable place to gather.

Our 2:00 start will insure plenty of daylight; if the weather is nice, we'll start outside at the picnic tables.



This year's format includes dedicated time for each participant to "show and/or tell" - using photos, artifacts, passages from letters, old documents, and family stories to bring to life their forebears' heritage. During this segment everyone will be allocated 5 minutes for their presentation.

The majority of past participants have indicated their intent to attend, as well as a few newcomers with roots firmly planted in the region.

In keeping with past tradition, everyone will share pot-luck desserts and Friends will provide the drinks.

Please e-mail or call Bryden Moon with any questions -

bemoonjr@aol.com or (830) 336-3375.

The Friends General Meeting will be held in conjunction with the Homesteader's Homecoming.

Bring a friend!



Park Programs March –May 2009

by Craig Hensley

***Honey Creek Hikes:**

Every Saturday, 9-11 a.m.

This guided hike through the beautiful Honey Creek State Natural Area is sponsored by *The Friends of Guadalupe River & Honey Creek. A donation of \$2 per person or \$5 per family is requested. Meet at the Rust House.

***Bird Programs:**

Bird Walk and Talk, Sunday, March 1, 8:30-10:30 a.m.

A Bird in the Hand, Saturday, March 14, 8:30-11 a.m.

Golden-cheeked Warbler Walk, Sunday, March 15 & 29, 8-10 a.m.

A Bird in the Hand (Bird Banding), Saturday, March 28, 8:30-11 a.m.

***Kids in Nature:**

Saturdays, March 7, 21; April 4, 11, 18, 25; May 2, 9, 23, 30; 9:30-10:30 a.m.

Each program provides children and parents an opportunity to learn about the natural world in an engaging and hands-on way. Check the Friends website for weekly program topics: www.honeycreekfriends.com/

***Nature Adventurers:**

Saturdays, March 7, 14, 21, 28; April 4, 11, 18, 25; May 2, 9, 23, 30; 2-3:30 p.m.

Join us for afternoons of fun, from tracking down critters in the river to catching butterflies and checking out skins, skulls and more. Check the Friends website for weekly program topics and details: www.honeycreekfriends.com/

***Saturday Night Speaker Series:**

Saturday evenings beginning March 7, start times vary, check website for individual program listings

Join us for an informative presentation each Saturday evening. Topics range from bats and astronomy to fish, hummingbirds, butterflies, and more. This program is sponsored by The Friends of Guadalupe River/Honey Creek. A suggested donation of \$2 per person or \$5 per family is welcomed.

***Full Moon Meanders:**

Tuesday, March 10, 7-8:30 p.m.; Thursday, April 9, 8-9:30 p.m.; Friday, May 8, 7:30-9 p.m.

Join our Park interpreter for a leisurely stroll along our nature trails under the light of the full moon.

***Stories in the Stars (Astronomy Programs):**

Saturdays, March 7, April 4, May 2; 8-9:30 p.m. (part of the Saturday Night Speaker Series)

Join us for an evening of star stories and star gazing through telescopes.

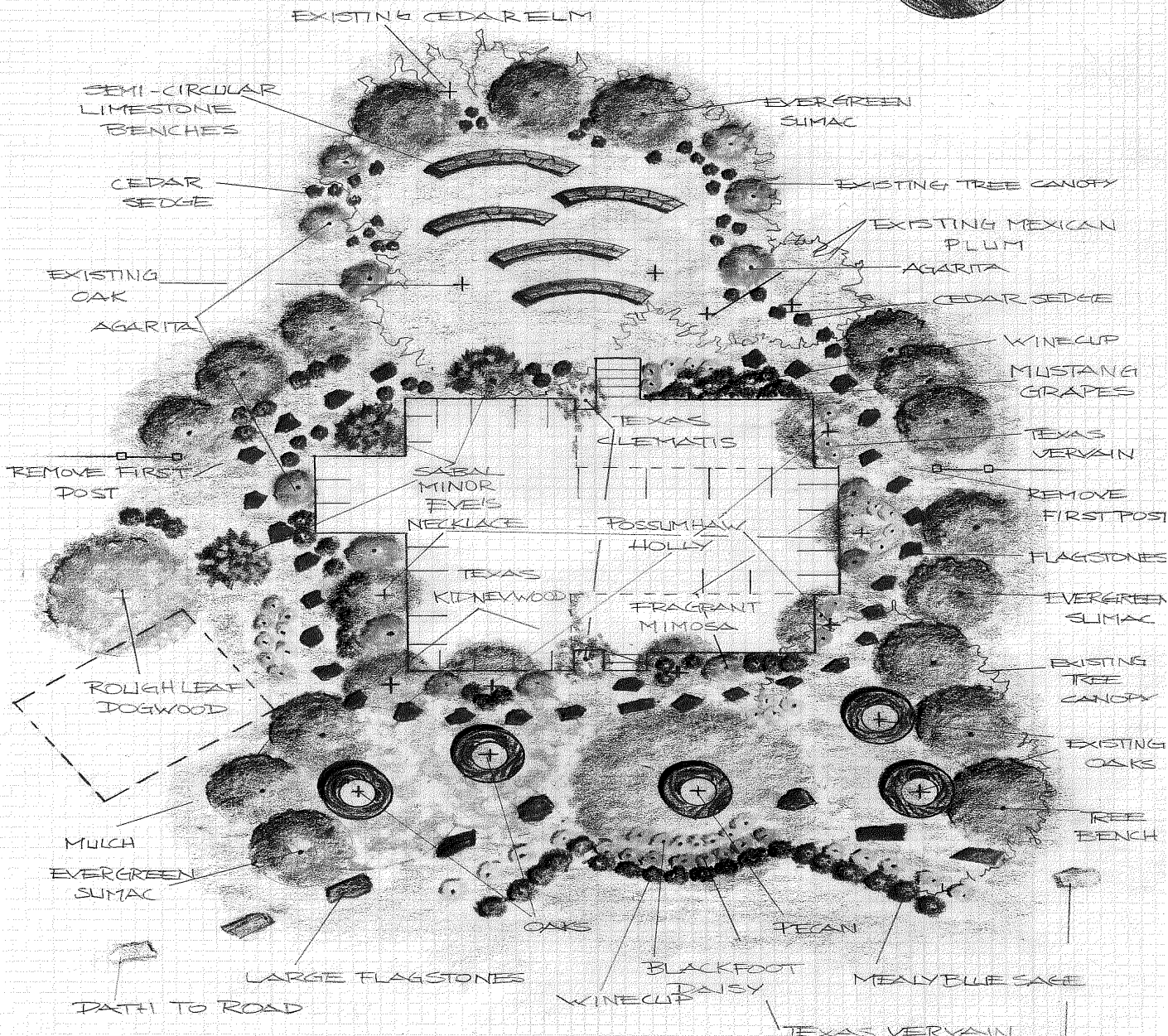
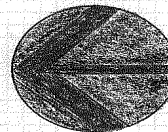
Please check the web-site for details, and program presenters and topics.

Rust House Plans

by Terry Urbanczyk

SCALE
1"=10'-0"

COMMISSIONED
BY THE
FRIENDS OF GUADALUPE
RIVER / HONEY CREEK



RUST HOUSE OF HONEY CREEK

DESIGN
BY
Jean Robinson

Friends' of GR & Honey Creek Goals

On the left you can see the landscaping design by Jean Robinson for the Rust House. It has been a major goal of the Friends group to restore, preserve and fully utilize this historic and lovely structure and within this year we should be able to meet these goals. Plans are underway to build the stone benches and install the plantings (as rain permits). A committee has been formed to design and install historical artifacts and documents inside the rooms of the old house so it will become a "safe house" where these precious items can be preserved and displayed for the public to enjoy. Events such as the **Homesteader Homecoming** have encouraged the local residents to bring forth important, valuable documents, information and living histories that have made these historical displays possible. A world of gratitude is due to Bryden Moon, Friends' History Chairman, and all of the members who have provided this information. If you or someone you know, have information and documents that would help add to the historic information of the Honey Creek area please feel free to share it with us by contacting Bryden or Craig Hensley at the park.

Since the park's inception there have been plans to build a large group pavilion to be used as an educational area and for private functions. There are frequent requests for such a pavilion by visitors and often school programs must be canceled due to inclement weather with no place for the children to take shelter. However, funds have not been available to make it a reality.

The Friends have voted to make the building of a large group pavilion a long term goal. A committee is forming to select a design and develop a timetable for the project and to organize and plan fundraising events that will help us reach our goal. This is a very large and daunting project for the small group of volunteers that make up the Friends group. But, our community is filled with knowledgeable, talented people who could join with us and make this happen. Please contact any of the Board members listed on page 1 of this newsletter if you can spare some time and talent to work toward this goal. Our efforts will have a lasting impression on our community, that we can be proud of, for generations to come.

Friends of Guadalupe River/Honey Creek, Inc. Membership

(Membership Renewal date is January 1st)

Name(s): _____ Date _____

Address: _____ City, State, Zip: _____

Email _____ Phone: _____

Membership Type: ___ New Member ___ Renewal ___ Change of Address

Level of Membership: ___ \$5 Education or Youth Organization ___ \$50 Sustaining Member
 ___ \$5 Student (under 18) ___ \$100 Contributing Member
 ___ \$10 Individual (over 18) ___ \$500 Corporate Partner
 ___ \$15 Family ___ \$1000 Life Membership

I would like to help the Friends by volunteering for:

___ Interpretive hikes ___ Outdoor Ed. Programs ___ Trail Maintenance
 ___ Historical Drama ___ Evening Programs ___ South Island Beautification
 ___ Trail Ride Event ___ Fundraising ___ Other _____

**Send checks payable to "Friends of GR/HC, Inc. Mail to: 3350 Park Road 31, Spring Branch, TX 78070
 Friends of Guadalupe River/Honey Creek, Inc. is a 501(c)3 organization. All donations are tax deductible.**

**Friends of Guadalupe River
and Honey Creek, Inc.**

3350 Park Road 31
Spring Branch, Texas 78070

We're on the web!
www.honeycreekfriends.com

The Friends of Guadalupe River and Honey Creek, Inc. is a non-profit organization working with Guadalupe River State Park and Honey Creek State Natural Area.

The "Friends" meet monthly at the Park. Please join us on the second Thursday at 7:00 pm.

And bring a friend!